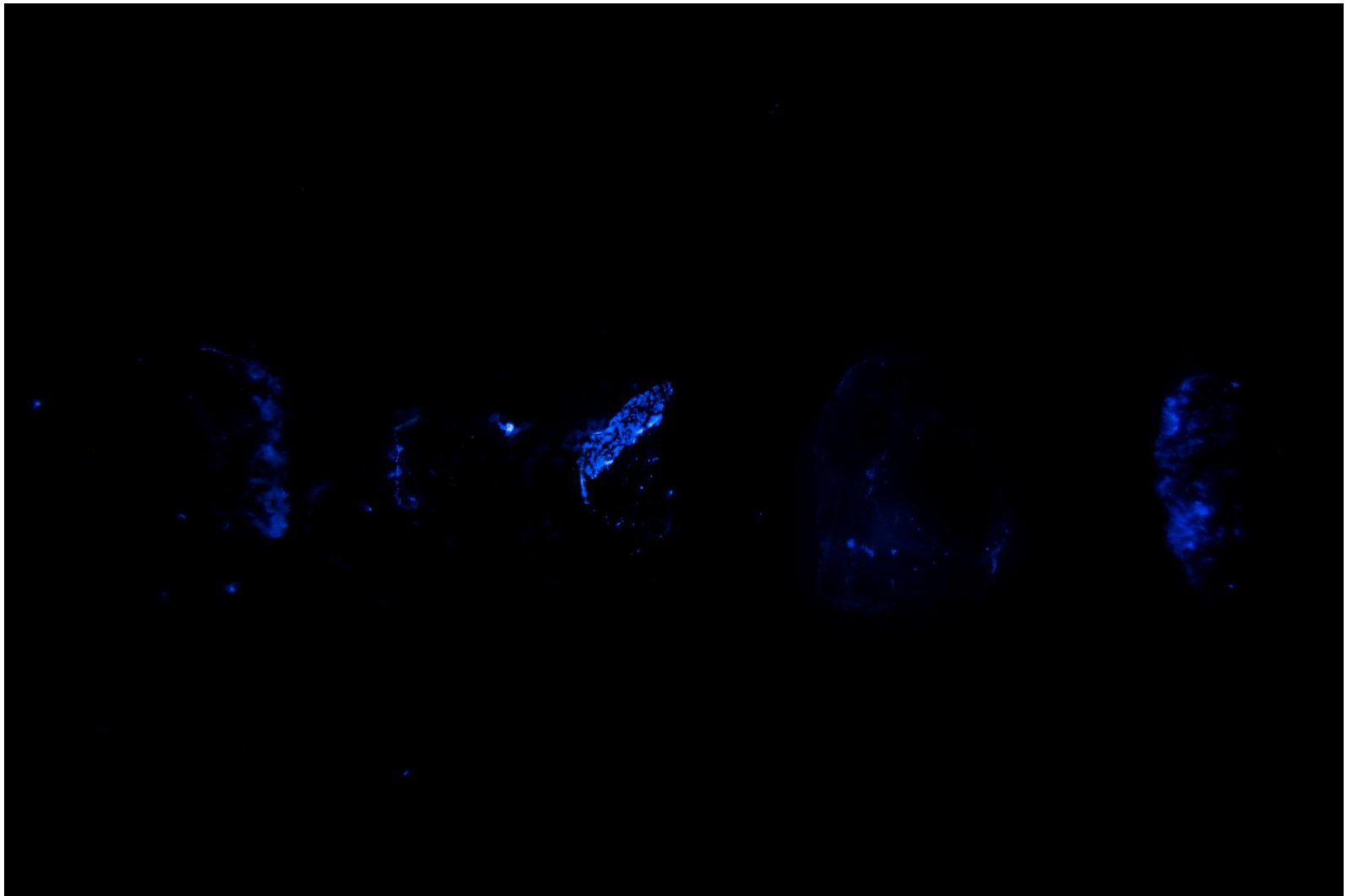




Positive control samples: the 2 and 3 counting from left to right, they have human blood and the rest were used to cut beef with one of its edges.



Positive control samples: the 2 and 3 counting from left to right, they have human blood and the rest were used to cut beef with one of its edges. In darkness.



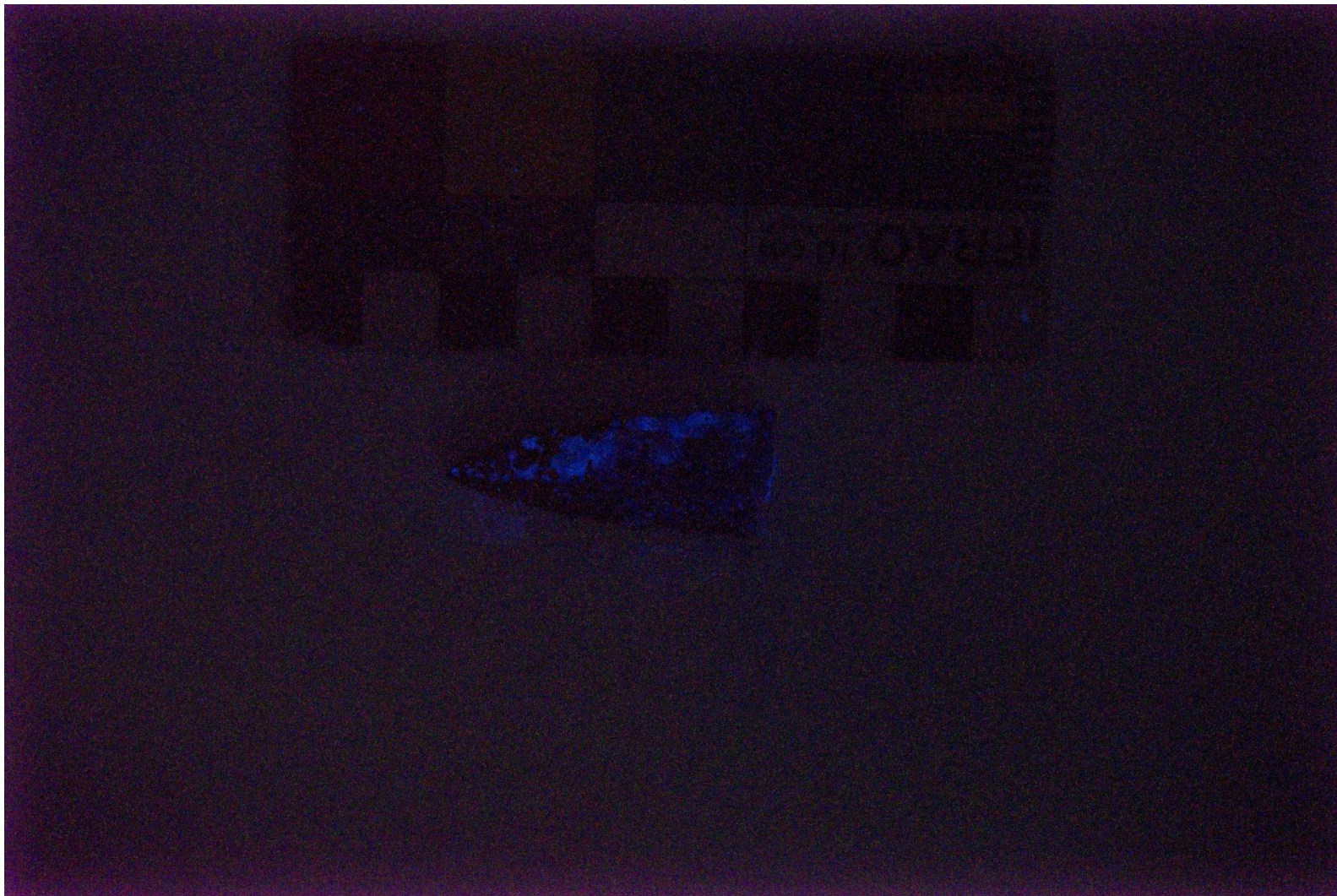
Sample PCz 1.2 C1 (3) (3) No. 154: with artificial light.



Sample PCz 1.2 C1 (3) (3) No. 154: In darkness.



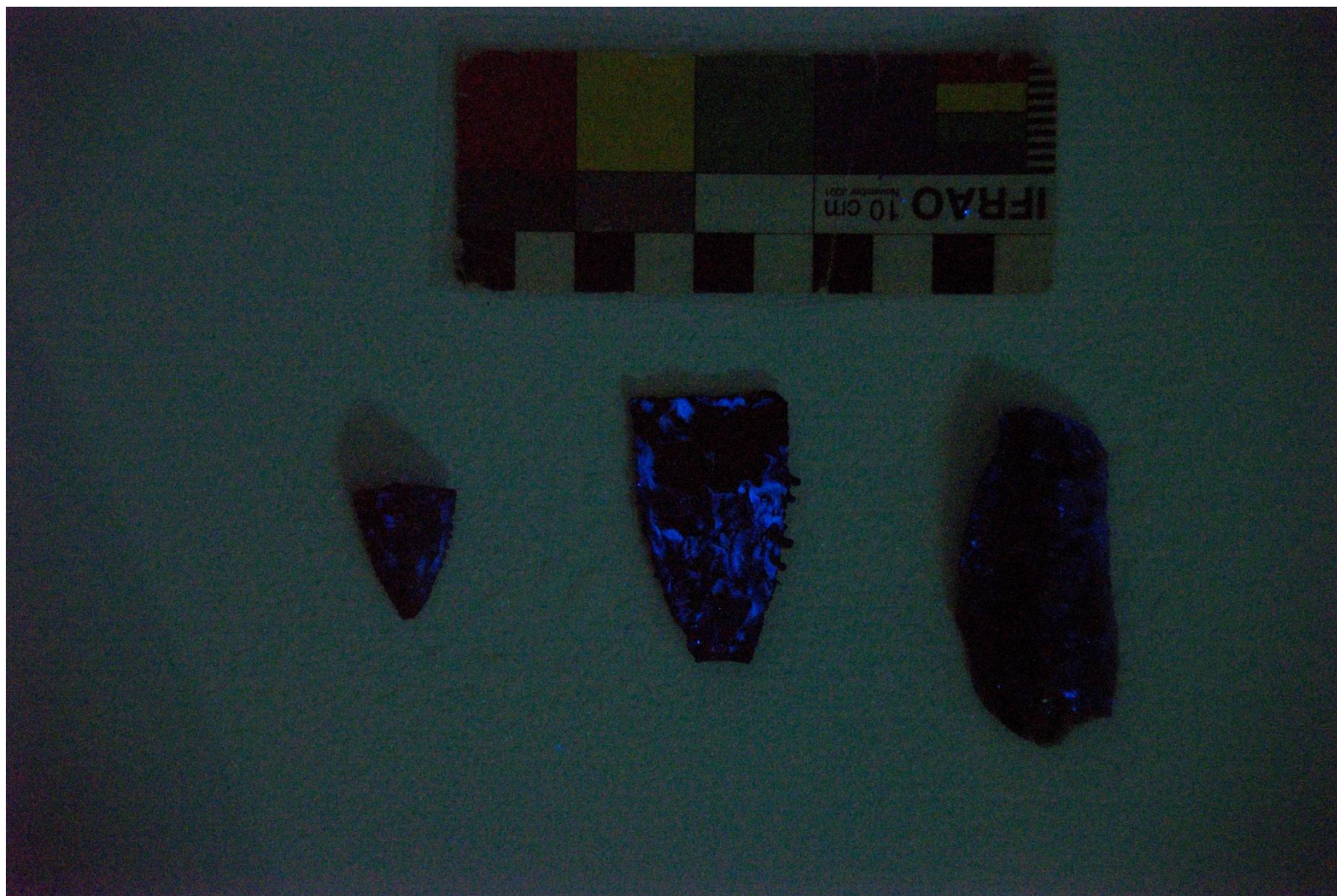
Sample PCz 1.2 C1 (3) (3) No. 154: with artificial light.



Sample PCz 1.2 C1 (3) (3) No. 154: In darkness.



Samples QS3: 2b16 N ° 85, 2b9 N ° 60 and 2b11 N ° 58 (from left to right).
With artificial light.



Samples QS3: 2b16 N ° 85, 2b9 N ° 60 and 2b11 N ° 58 (from left to right). In darkness.